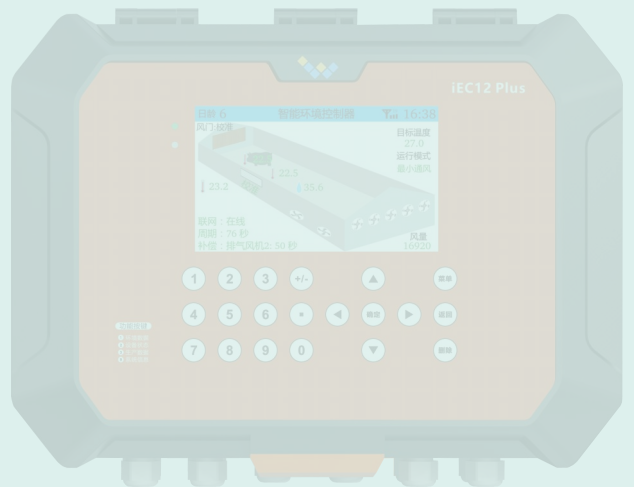




# Smart Farming Solutions



Shenzhen Loongk Technology Co.,Ltd



**Sincere, Cooperation, Liberal, Win-Win**

## » Ten years concentration makes profession

Loongk is one of the leading intelligent equipment suppliers for animal husbandry in China, which delicate to the development platform of livestock climate control and Internet of Things (IOT) technology. We offer efficient, sustainable and one-stop solutions for customers. After ten years of intensive R&D, we obtained a number of key patents and successfully built a comprehensive Internet of things (IOT) platform for the domestic first-class livestock groups.

National High-Tech Enterprise

National Key Scientific Research Project responsible institution in the 13-Five Year Plan

Zhejiang University Scientific Research cooperation institution

Key project partner of BUAA Research Institute Shenzhen branch

R&D institute of the Internet of Things branch of the National Poultry Center

Guangdong Wens Group IoT Project cooperation partner

With 20 years of industry experience and more than twenty affiliated enterprises of science and research

# » Certificates



## 高新技术企业 证书

企业名称: 深圳市朗锐恒科技开发有限公司

证书编号: GR202144205075

发证时间: 二〇二一年十二月二十三日

有效期: 三年

批准机关:









QUALITY

Shenzhen L

Is in co

The Certificate is valid  
Environment Controlle

Registered address :

Audit address : 4A, Flo

This certificate will not ren  
within the 3 years validity



CHINA STAI  
Bul

ISO 9001

华标认证  
诚信致远

ISO 9001

华标认证  
诚信致远



### 质量管理体系认证证书

证书编号: 22820Q11502R0S

统一社会信用代码: 91440300573148774Y

兹证明:

**深圳市朗锐恒科技开发有限公司**

质量管理体系符合:

**GB/T 19001-2016/ISO 9001:2015 标准**

证书覆盖范围: 养殖环境控制器、养殖湿度传感器、养殖物联网网关和养殖中央报警器的研发和销售

注册地址: 深圳市南山区桃源街道龙珠三路光前工业区 21 栋 4 楼 4A

审核地址: 深圳市南山区桃源街道龙珠三路光前工业区 21 栋 4 楼 4A

颁证日期: 2020 年 06 月 22 日

有效期至: 2023 年 06 月 21 日

初次颁证日期: 2020 年 06 月 22 日

本证书须在国家规定的各行政许可、资质许可有效期内使用方有效。本证书有效期 3 年, 每 12 个月内须接受一次监督审核, 并与《年度确认通知书》一起使用方可有效。



中国认可  
国际互认  
管理体系  
MANAGEMENT SYSTEM  
CNAS C228-M



证书有效性以左侧二维码扫描内容为准  
国家认监委证书查询网址: www.cnca.gov.cn  
华标卓越认证(北京)有限公司网址: www.hbzbchina.com



**华标卓越认证(北京)有限公司**

北京市朝阳区北四环东路106号院5号楼(100029)

# Loongk Product Series



iEC1680 Series



iEC22 Plus Series



iEC12 Plus Series



L1101 Feed Line Controller



EC Fan Controller



Water Line Controller

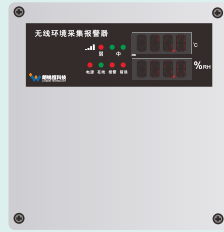


Central Alarm Controller

# Loongk Product Series



Window Controller



Wireless Collection Alarm



Farming IoT Gateway



Ammeter



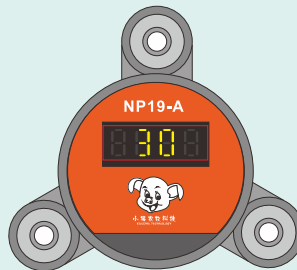
Water Meter



Weighing System



Humidity Sensor



Negative Pressure Sensor



Co2 Sensor

# Support both Site networking and cloud networking modes

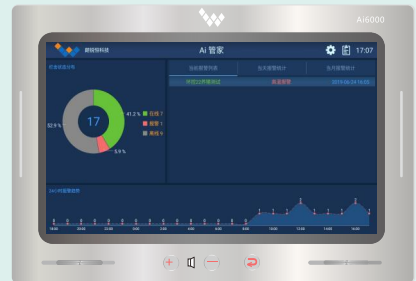
## Cloud networking



## Site networking



## Centralized alarm AI butler in the site



### Cloud networking advantages:

Remotely connect to the climate controller for various functional operations without limits by locations

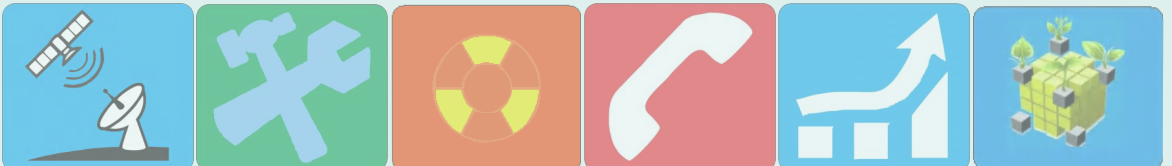
### Site networking advantages:

When no external network, you can check the climate indicators and equipment status , and modify the parameters of the climate controller through the site network





## » Basic function of Farming IOT system



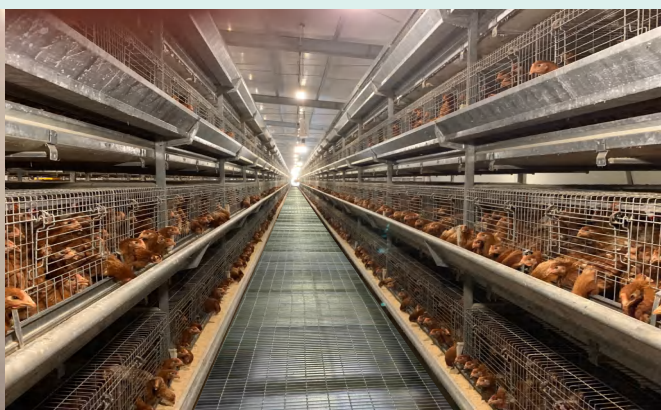


# Easily meet the climate control requirements of high stocking density on multi-tier cage chick farms

## iEC1680



partition temperature control/large screen with wide temperature/  
touch + button/support multiple languages/support backup  
battery/ expandable number of control channels/powerful  
functions of networking software/support power failure  
alarm/support high temperature alarm



# » iEC22 Plus Climate Controller



1. 22 channel relays + 4 channel analog outputs
2. Support negative pressure control type
3. 7 channel temperature, 2 channel humidity
4. Self-contained battery power detection
5. Support 4-20mA/0-10V input
6. Support 485 bus device access
7. 5 module expansion bits
8. Support 4G and Ethernet access networking
9. Support fan rotation
10. 7-inch large screen, simpler and more intuitive configuration

# » iEC12 Plus Climate Controller



1. 12 channel relays + 3 channel analog outputs
2. Support negative pressure control type
3. 3-way analog output
4. Support 4-way temperature
5. Support 2-way humidity
6. Support sensor expansion
7. Support power failure alarm (requires battery power)
8. Support access to the Internet of Things system
9. Support fan rotation and exchange
10. Support dual power

## » EC fan dedicated climate controller



1. Special for EC fan
2. EC fan bus interface
3. Mixing of constant speed fan, variable frequency fan and EC fan
4. 8 channel relays + 6 channel analog + EC bus
5. Internet of Things (APP and computer software)
6. Backup battery power supply interface
7. Level-free setting of intelligent ventilation algorithm
8. Negative pressure small window control function
9. 4KV surge high safety protection level 10,  
Ip65 waterproof and dustproof design





# CCM1000 window controller



1. 220V or 24V power supply
2. Available to set the parameters of the small window switch
3. Support manual or external controller control
4. Real-time display of the opening of the air inlet window
5. Support various air inlet window motor control

# »» Chicken Farm Waterline Control & Alarm



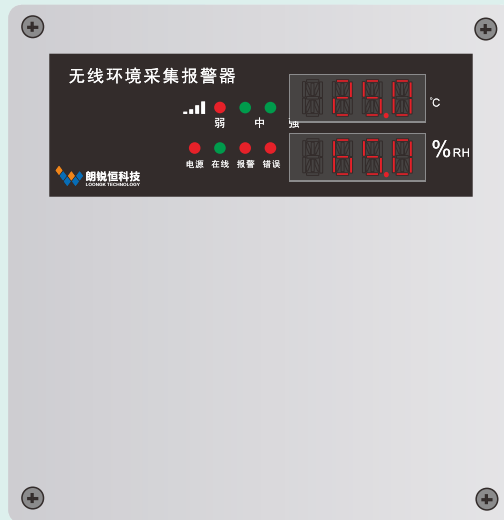
1. Water shortage alarm
2. Automatic flushing/automatic dosing
3. Manual emergency mode
4. No limits of waterline numbers in distributed system

# ➤➤ Ai6000 Central Alarm Controller



1. Support 100 environmental controllers to collect alarm information
2. 220V power supply (built-in battery, power failure alarm)
3. Available to connect to one channel of alarm horn output (12V output)
4. Support voice output of alarm content
5. Support the free choice of alarm content
6. Support SMS and phone alarm
7. Support alarm statistics and alarm log query
8. Shortcut keys (volume "+-" "alarm reset")
9. Support 4G full Netcom, WIFI and wired network
10. Support RS485 communication expansion function

## »» L601 Wireless climate collection alarm



1. Phone SMS alarm for major events such as power failure and high temperature
2. Easy install, no construction required
3. Built-in battery, can work when power off
4. High reliability ,no maintenance needed
5. Built platform to make the most use of data
6. Strong anti-interference ability
7. Suitable for animal husbandry, greenhouse and other industries
8. Available to connect to the Internet of Things system

## » N2000 Farming IoT Gateway



1. Networking function of farming climate controller
2. Applicable to leading brands
3. SMS phone alarm function
4. Remote data acquisition and monitoring function
5. Available to collect external material, water, electricity and gas, etc.
6. With wired network and 4G full Netcom access function
7. Powerful software for mobile phone and PC
8. Available to connect to Backup battery
9. Easy install in upper rail way
10. Built platform to make the most use of data

## » C0219 CO2 Sensor



1. Highly reliable sensor for industrial farming
2. Adopt high-precision chip module design
3. Full sealed shockproof design, waterproof and dustproof
4. No maintenance needed, no need to replace parts for long-term use
5. Anti-surge protection
6. Strong anti-interference ability
7. Suitable for animal husbandry, greenhouse and other industries
8. Automatic calibration
9. Temperature compensation
10. Easy install



## » RHS17 Humidity Sensor



1. Highly reliable industrial sensors
2. Adopt high-precision chip module design
3. Sealed with epoxy potting, waterproof and dustproof
4. Automatic recovery after being soaked in water
5. Anti-surge protection
6. Strong anti-interference ability
7. Suitable for animal husbandry, greenhouse and other industries
8. Automatic calibration
9. Temperature compensation
10. Easy install

# iEC Environment Controller Features

1. More security with dual system, the independent design of control system and human-computer interaction
2. More security with dual power supply
3. Strong anti-interference ability and high stability with power-level electromagnetic compatibility design
4. Free to set the relay function to meet the needs of various power equipment configuration and combination schemes
5. Adaptive ventilation algorithm, smooth ventilation in the house to avoid stress
6. Effectively extending the lifespan of the fan with fan rotation algorithm,
7. Comfortable temperature with air cooling effect algorithm
8. Reduce maintenance costs and effectively prevent the spread of the epidemic by remote and on-site centralized settings
9. Remote and field centralized diagnosis can solve problems in a timely manner and ensure the optimal operating state of the system
10. New function update in time by remote upgrade
11. Strong scalability to satisfy users to access various non-standard sensors and equipment
12. Easy to operate with graphical interface
13. Support batch import and export of controller parameters, which is convenient for batch installation
14. Historical data is accurate to every minute, and the equipment operations can be accurately viewed
15. Built-in professional wired & wireless networking for iEC series climate controller
16. Multiple dampers, small windows and heating zones for different requirements
17. Support both site networking and cloud networking, and site networking mode does not require Internet support
18. Site centralized alarm and large-screen routine board support both

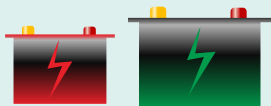
## » Introduction to iEC

Dual CPUs run at the same time to improve reliability



Operate independently  
Control panel failure does not affect device control

Dual power supply for improved security



Backup battery capacity detection



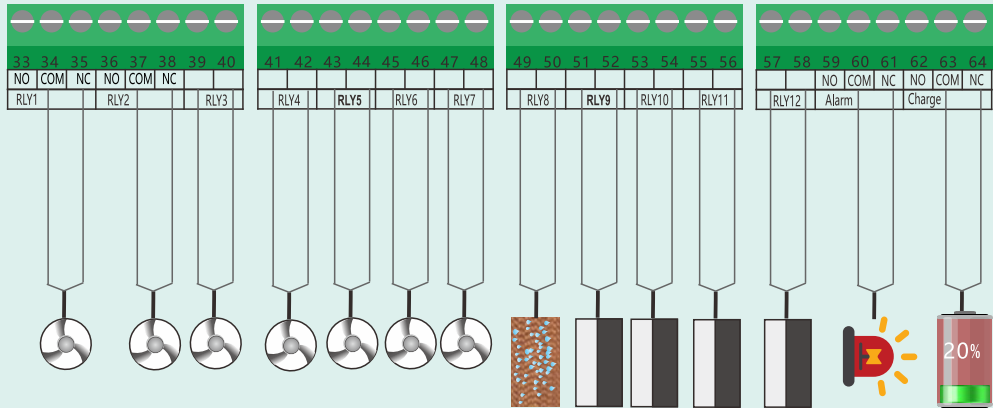
In time low battery power warning

Power level electromagnetic compatibility design,  
strong anti-interference ability



# Introduction to iEC

The relay does not specify the type of equipment, free access to equipment



## Remote setting, input and output parameter

Easy and convenient to modify parameters in various methods

系统参数 [ 蛋鸡舍 ]

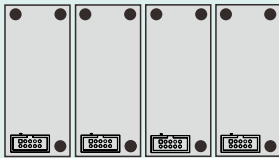
日期:

| 温度 | 湿度 | 静压       | 通风        | 灯光        | 灯光参数 | 喂料 | 保温 | 降温 | 传感器 | 设备 | 尺寸 |
|----|----|----------|-----------|-----------|------|----|----|----|-----|----|----|
| 序号 | 日龄 | 目标温度(°C) | 呼吸量(m³/h) | 限制风速(m/s) |      |    |    |    |     |    |    |
| 1  | 1  | 24       | 2         | 10        |      |    |    |    |     |    |    |
| 2  | 0  | 0        | 0         | 0         |      |    |    |    |     |    |    |
| 3  | 0  | 0        | 0         | 0         |      |    |    |    |     |    |    |
| 4  | 0  | 0        | 0         | 0         |      |    |    |    |     |    |    |
| 5  | 0  | 0        | 0         | 0         |      |    |    |    |     |    |    |
| 6  | 0  | 0        | 0         | 0         |      |    |    |    |     |    |    |
| 7  | 0  | 0        | 0         | 0         |      |    |    |    |     |    |    |

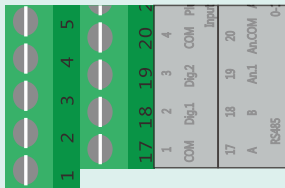
# » Introduction to iEC

Powerful extension function, strong compatibility

Expansion slot



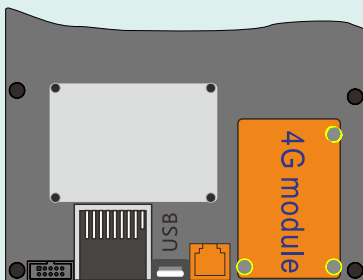
⇒ Feed tower weighing  
Pressure Module  
Gas Sensor  
Light Sensor  
Wind Speed Sensor



⇒ Bus interface & sensor interface

Optional built-in networking module

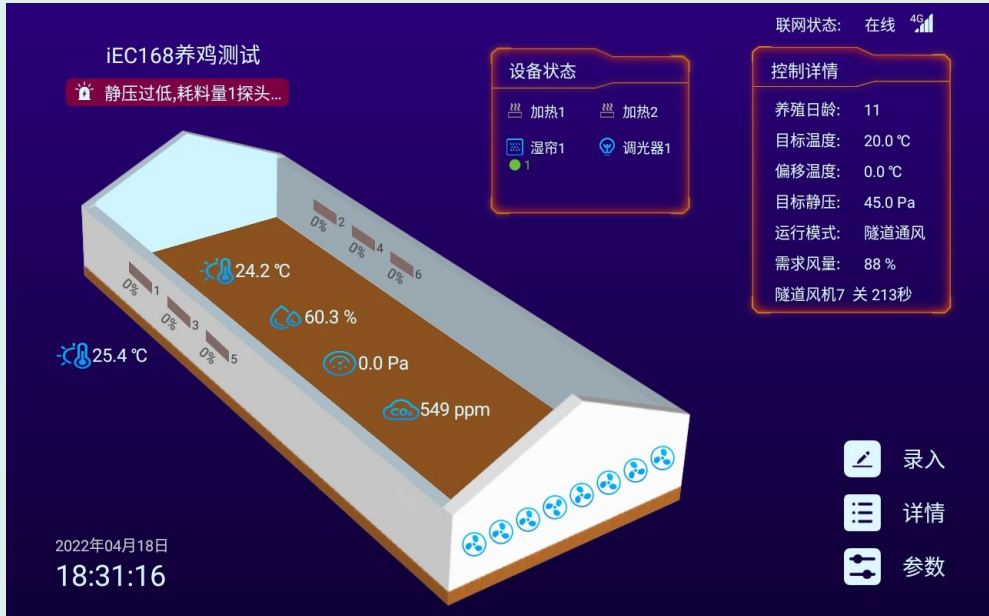
Ethernet + 4G full Netcom



RJ45 

# Introduction to iEC

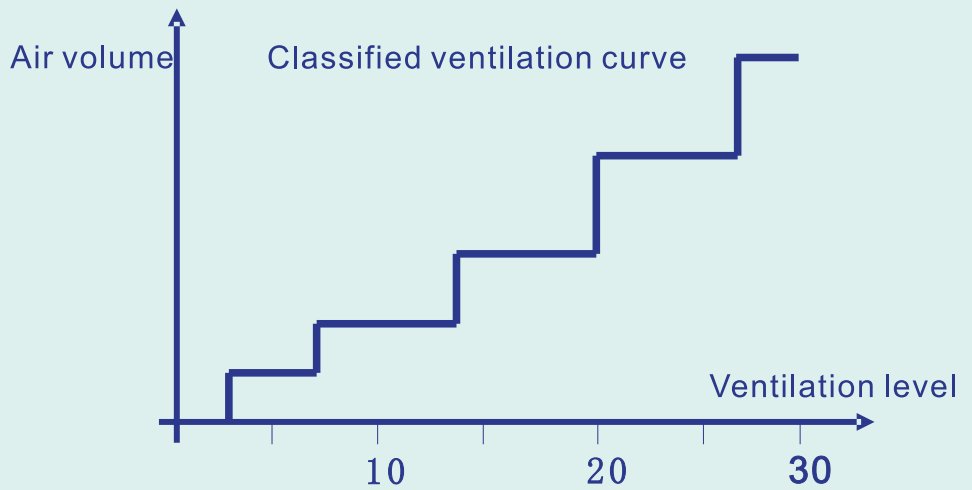
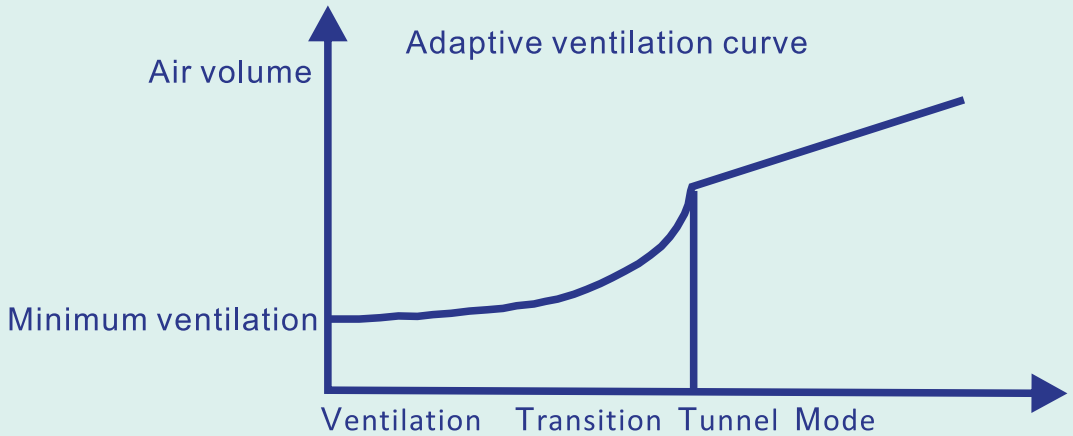
Easy, concise and intuitive with graphical interface





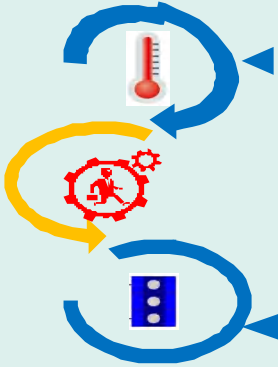
# » Introduction to iEC

Accurate and efficient adaptive ventilation algorithm



# » Introduction to iEC

## Emergency ventilation control

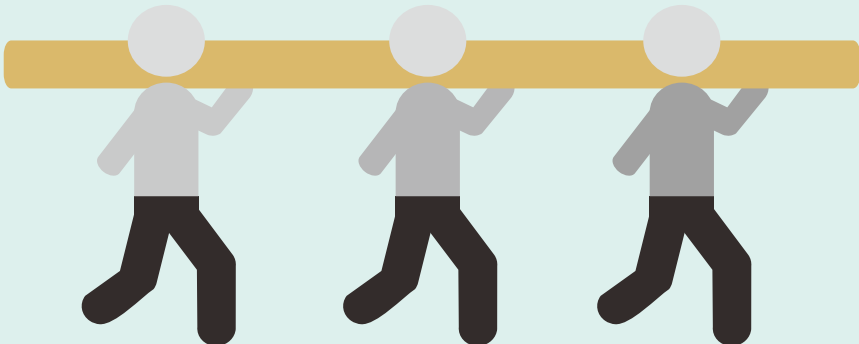


Available to set an absolute high temperature value data as a backup alarm temperature and emergency ventilation control.

Equipped with two sets of normally closed relay output ports, which can ensure the operation of the fan group even if the climate controller fails.

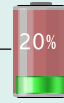
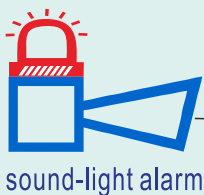
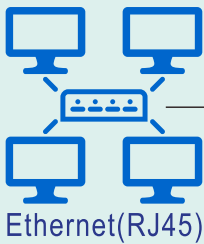
## Fan rotation function

Rotate different group of fans will increase the protection efficiency and lifespan.



# Introduction to iEC

## Applications



Battery level detection



20 interfaces of fan



Variable frequency heater

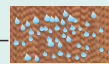


dimmer

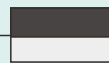


Variable frequency fan

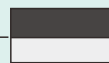
4-channel analog output



Wet curtain



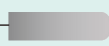
Ventilation window



air door



Ammeter



Humidity Sensor



temperature sensor



silometer



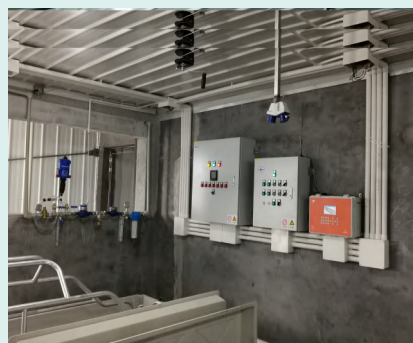
Water Meter



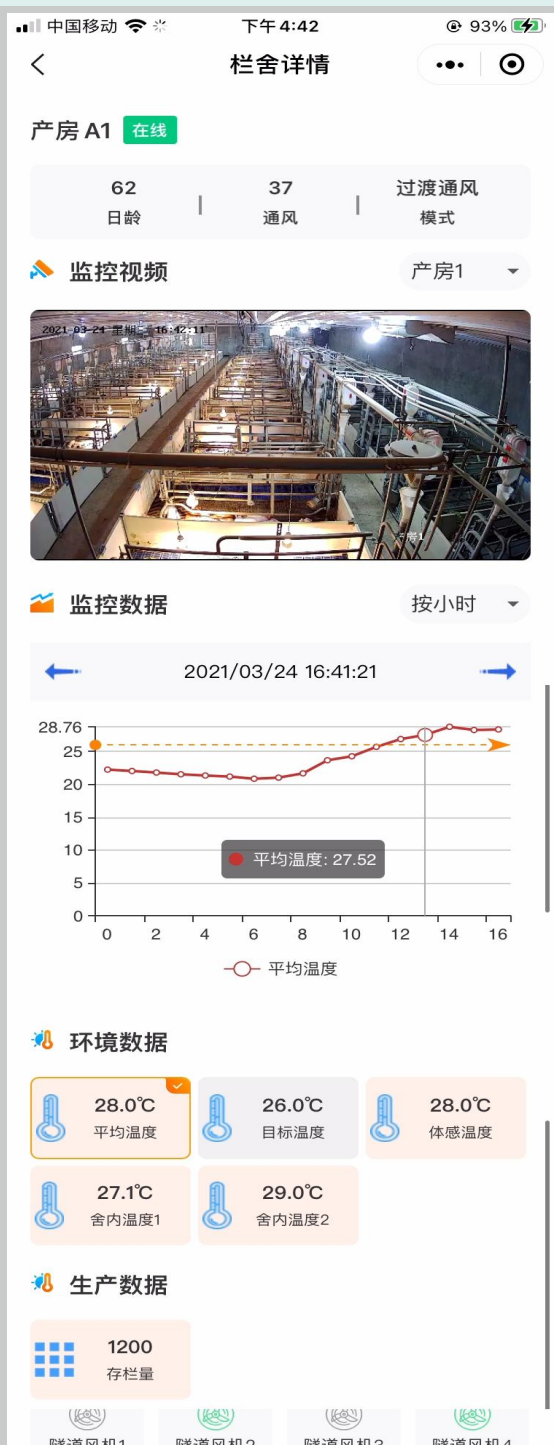
CO2 sensor

# Introduction to iEC

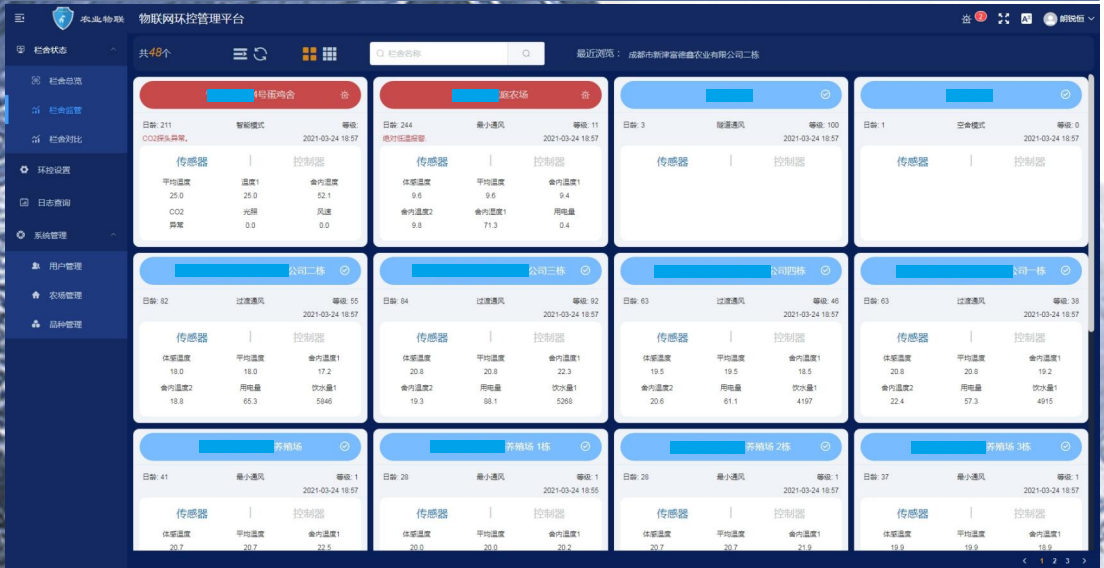
## Production & Projects



# iEC climate controller App



# IEC climate controller PC applications





A low-angle, first-person perspective shot of a hiker's feet in dark, rugged hiking boots with thick soles, standing on a rocky and snow-dusted mountain ridge. The background features a vast, majestic mountain range under a clear blue sky with a few wispy clouds. The sun is visible on the left, creating a bright glow and a lens flare effect. The overall scene conveys a sense of adventure and high-altitude exploration.

Think big, aim high, and stay down to earth



**Profession | Concentration | Service**  
**Sincere, Cooperation, Liberal, Win-Win**

**To be a smart executive of modern agriculture**

**Animal husbandry IOT management platform**  
**Intelligent farming solution**



Shenzhen Loongk Technology Development Co., Ltd.

Address: 4th Floor, Building 21, Guangqian Industrial Zone, Longzhu 3rd Road, Nanshan District, Shenzhen

Website: [www.loongk.com](http://www.loongk.com)

